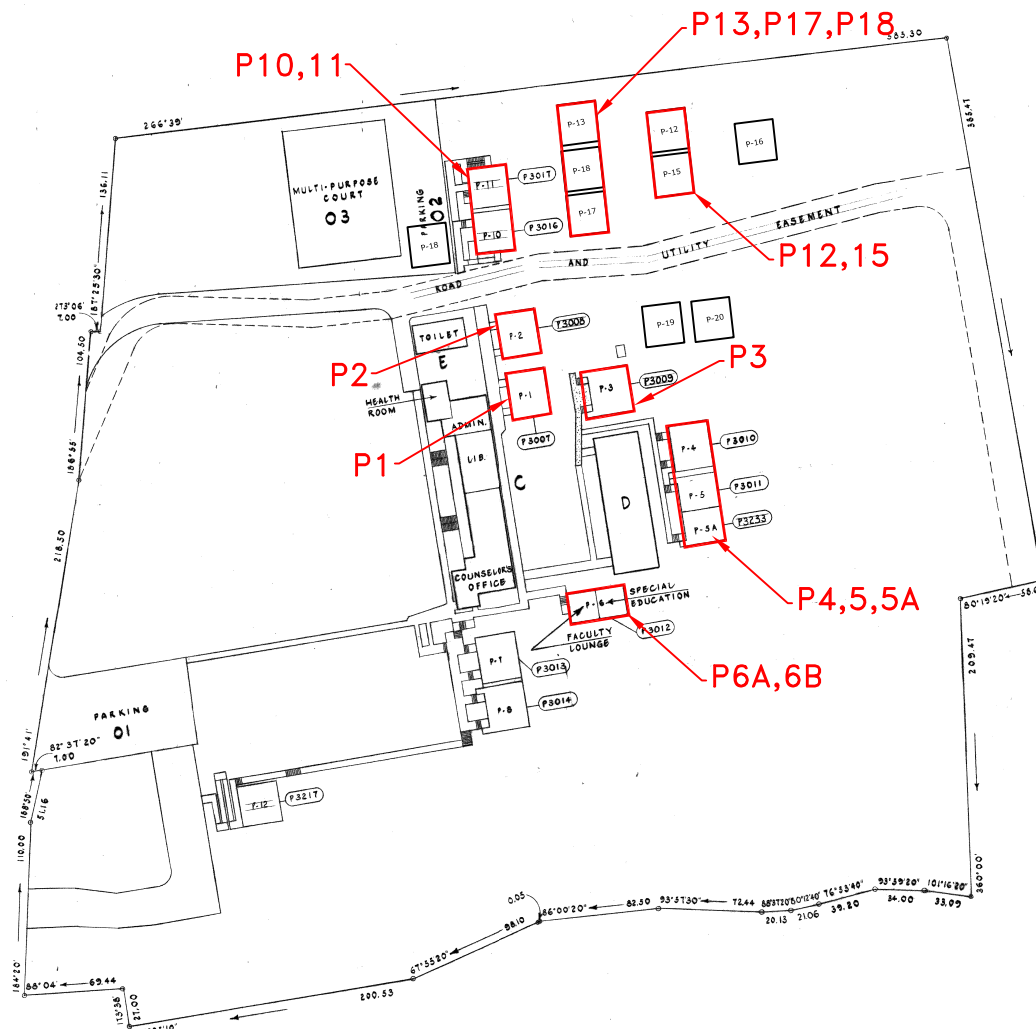
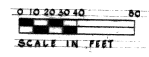


TRUE NORTH



# HOLUALOA ELEMENTARY SCHOOL



AREA OF SCHOOL	7.874 AC.
NUMBER OF PARKING STALLS	

REVISED: DEC. 1997

REVISION NO.	DATE	DESCRIPTION	APPROVED BY
DEPT. OF ACCOUNTING & GENERAL SERVICES DIVISION OF PUBLIC WORKS STATE OF HAWAII			
<b>HOLUALOA ELEM. SCHOOL</b> NORTH KONA, COUNTY OF HAWAII TAX MAP KEY: T-6-04-02, T-6-05-15			
<b>PLOT PLAN</b>			
DESIGNED BY:	CHECKED BY:	DWG. JOB NO.	DRAWING NO.
DRAWN BY:	APPROVED BY:	DATE	SHEET
SCALE:	DRAWN:	DATE:	BY: